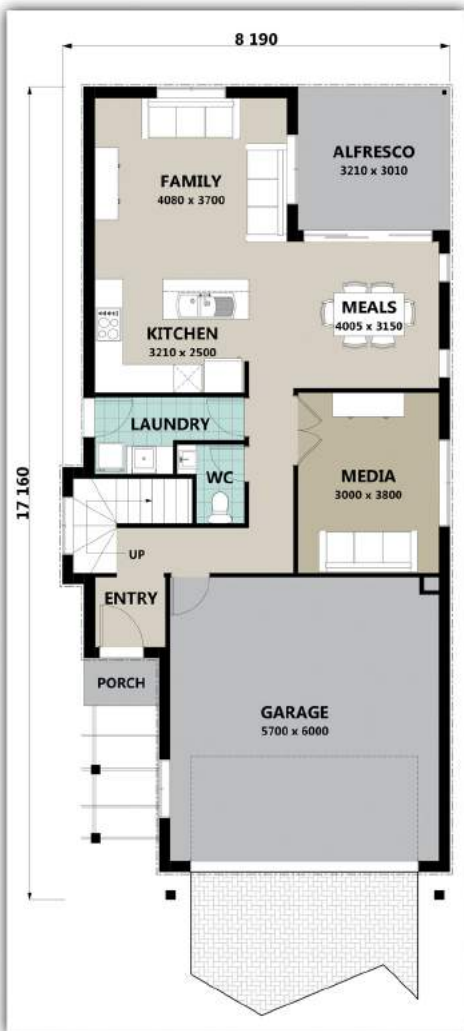




'The Hampton 208'

Home Features

Lower Floor Area	112.5m ²
Upper Floor Area	84.7m ²
Porch Area	1.6m ²
Alfresco Area	9.7m ²
Total Floor Area	208.5m²



LOWER FLOOR



UPPER FLOOR

Designer Notes:

This two-storey home has been designed to maximise living space. The Hampton 208 offers an inspiring array of spaces which provides a great answer to your entertaining needs.

On the ground floor a gorgeous kitchen, meals room, and not one living space but two. The Family and Media both provide the perfect place for enjoyment at any time of the day. Upstairs is dominated by the four bedrooms and two bathrooms. The Master bedroom has been positioned to the front of the house providing privacy, with the added luxury of its own WIR and Ensuite.

Email: Sales@richardadamshomes.com.au

Richard Adams

RESIDENTIAL &
COMMERCIAL
BUILDERS