



Perspective & Floor Plan are artists impressions only

'The Ridge'

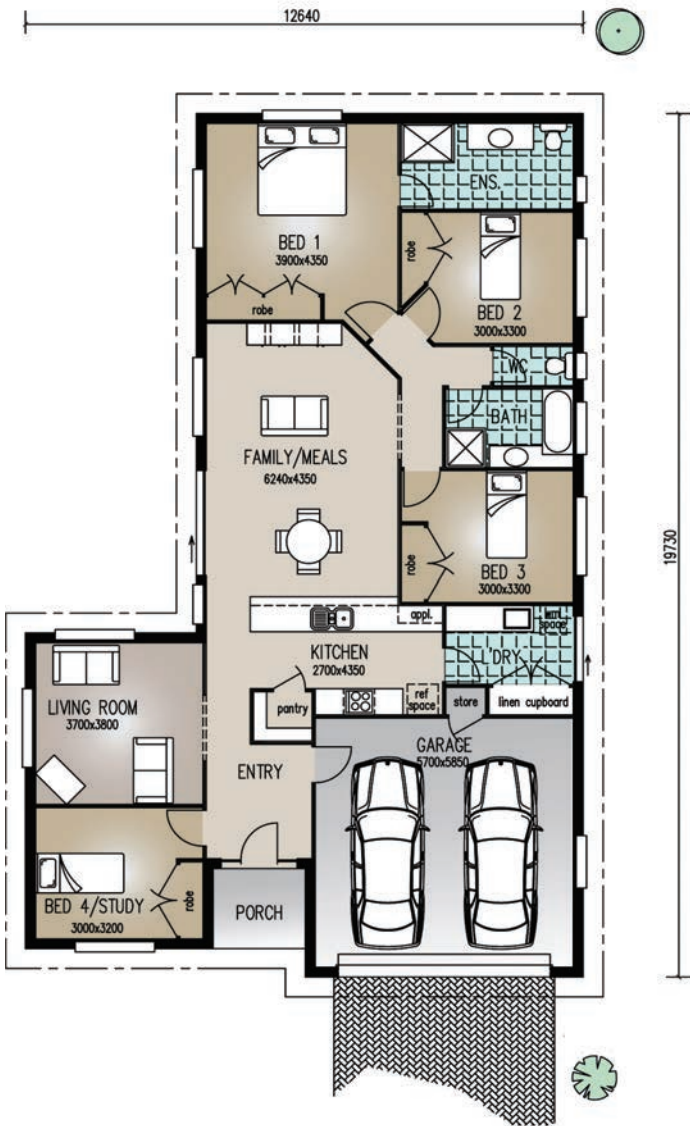
Home Features

Living	195.50m ²
Porch	3.80m ²
Total Floor Area	- 199.30m²

Designer Notes:

To enjoy a completely separate Living or quiet Theatre area, this home is perfect! The Kitchen and Laundry area work well in close proximity and you may convert the front Office to a 4th Bedroom if that suits. Flexibility in design here allows many options for increasing room sizes and this home is particularly suited to narrow blocks.

email:
sales@richardadamshomes.com.au



Richard Adams

RESIDENTIAL &
 COMMERCIAL
 BUILDERS