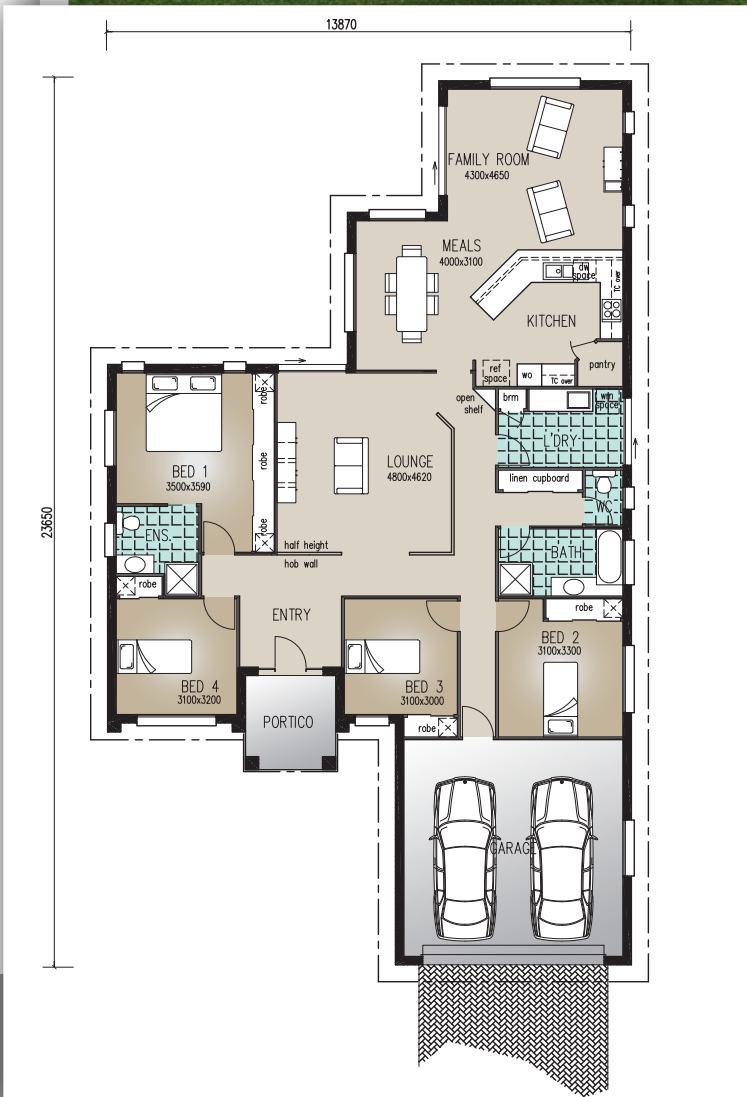




Perspective & Floor Plan are artists impressions only



## 'The Athena'

### Home Features

Living	219.20m <sup>2</sup>
Portico	6.0m <sup>2</sup>
<b>Total Floor Area</b>	<b>225.20m<sup>2</sup></b>

### Designer Notes:

This popular design has a luxurious Entry and features a stylish central Lounge area. The 4 Bedroom layout is separate from the main Kitchen and Living, and therefore suits young families who don't want their children sleeping at 'the other end of the house'. It's an attractive home with large rooms and is easily extendable should even more space be required.

email:  
[sales@richardadamshomes.com.au](mailto:sales@richardadamshomes.com.au)

# Richard Adams

RESIDENTIAL &  
 COMMERCIAL  
 BUILDERS