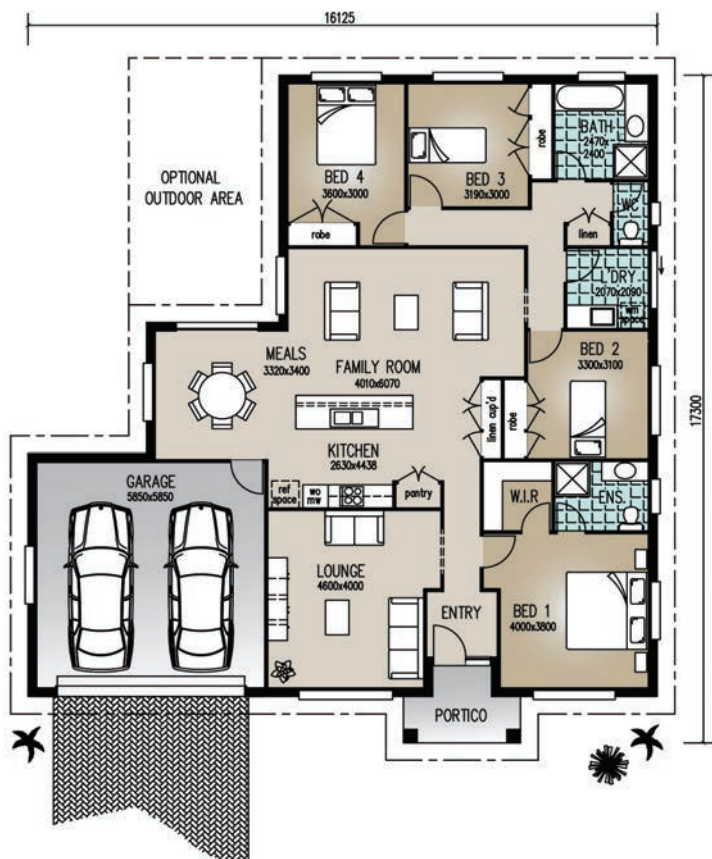




Perspective & Floor Plan are artists impressions only



'The Cottonwood'

Home Features

| | |
|-------------------------|----------------------------|
| Living | 206.90m ² |
| Portico | 4.80m ² |
| Total Floor Area | 211.70m² |

Designer Notes:

This design continues to be a 'best-seller'. It is compact, but the layout allows for a wonderful sense of style and smart design – particularly in the Kitchen which is open-plan. The use of space in this large room is not only very attractive but with 2 Living areas it remains extremely functional for a family.

email:
sales@richardadamshomes.com.au

Richard Adams

RESIDENTIAL &
 COMMERCIAL
 BUILDERS