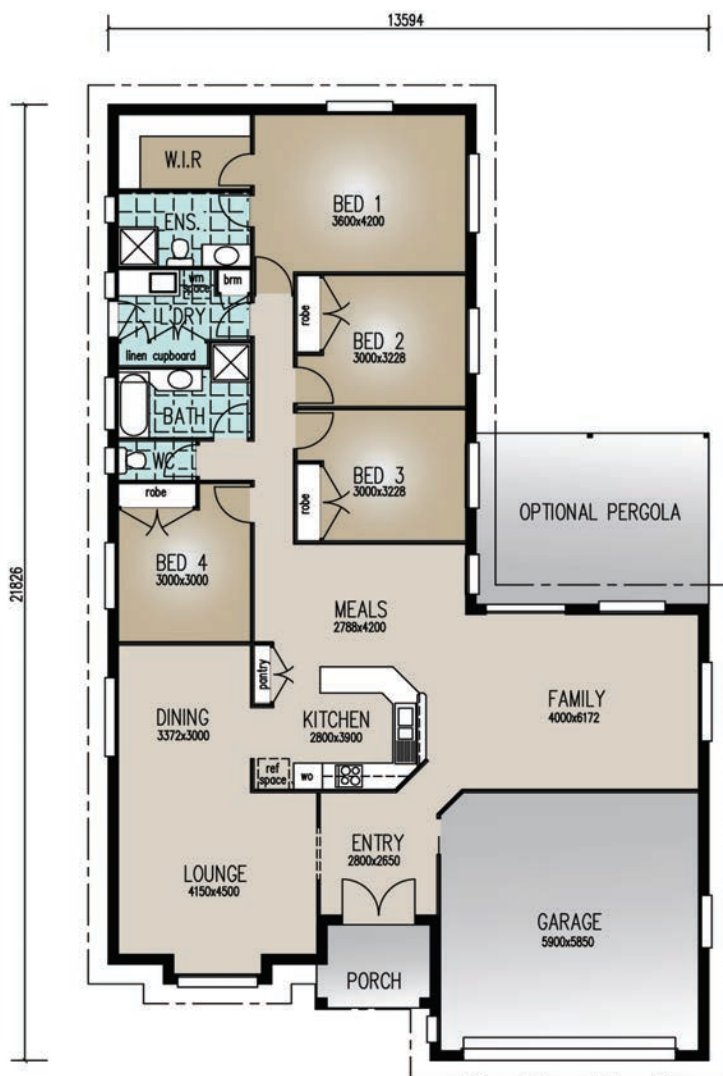




Perspective & Floor Plan are artists impressions only



## 'The McClymont'

### Home Features

Living	219.50m <sup>2</sup>
Porch	4.70m <sup>2</sup>
<b>Total Floor Area</b>	<b>224.20m<sup>2</sup></b>

### Designer Notes:

This is a large plan with all the Bedrooms at one end of the home – which particularly suits young families. It includes a Formal Dining area near the massive Kitchen, and is literally the hub of the home. If no Dining is needed, why not swap it for larger areas in the Lounge and Bedroom 4?

email:  
[sales@richardadamshomes.com.au](mailto:sales@richardadamshomes.com.au)

# Richard Adams

RESIDENTIAL &  
 COMMERCIAL  
 BUILDERS