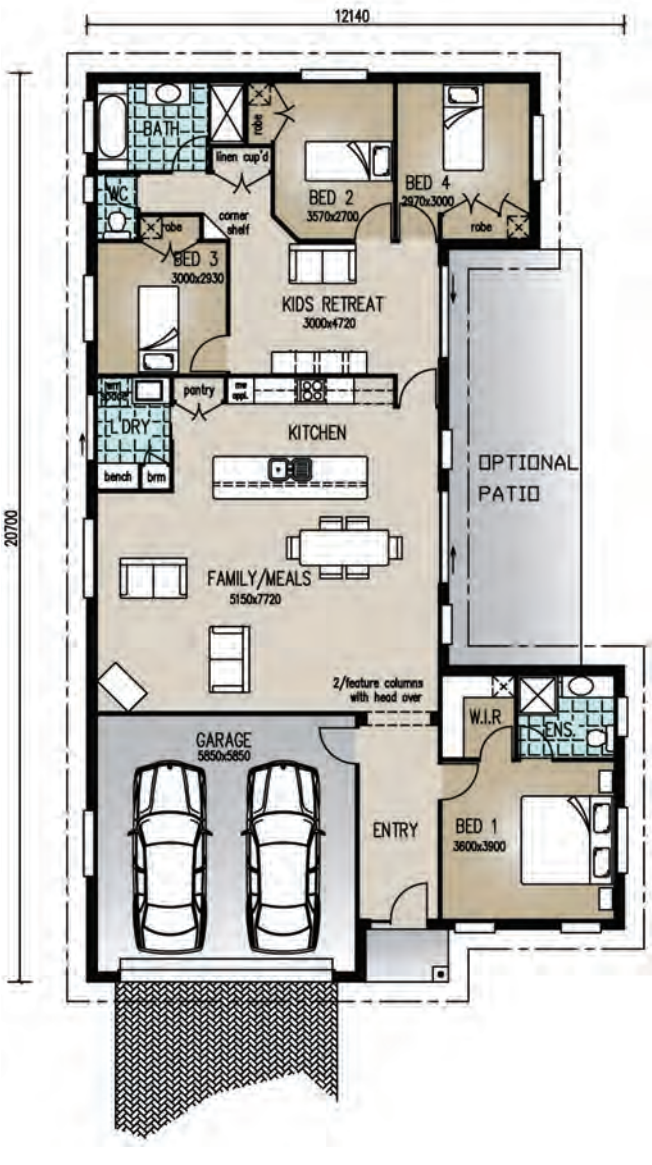




Perspective & Floor Plan are artists impressions only



'The Rodeo'

Home Features

Living	199.00m ²
Porch	2.20m ²
Total Floor Area	201.20m²
Optional Patio	28.40m ²

Designer Notes:

This elegant layout with 4 Bedrooms and a Kids Retreat allows for everyone to escape to their own area. With the option to add a third living area, this home has flexibility and a modern layout that will impress everyone as well as being budget-conscious. The optional outdoor covered area brings an amazing entertaining space in homes we've built already.

email:
sales@richardadamshomes.com.au

Richard Adams

RESIDENTIAL &
 COMMERCIAL
 BUILDERS