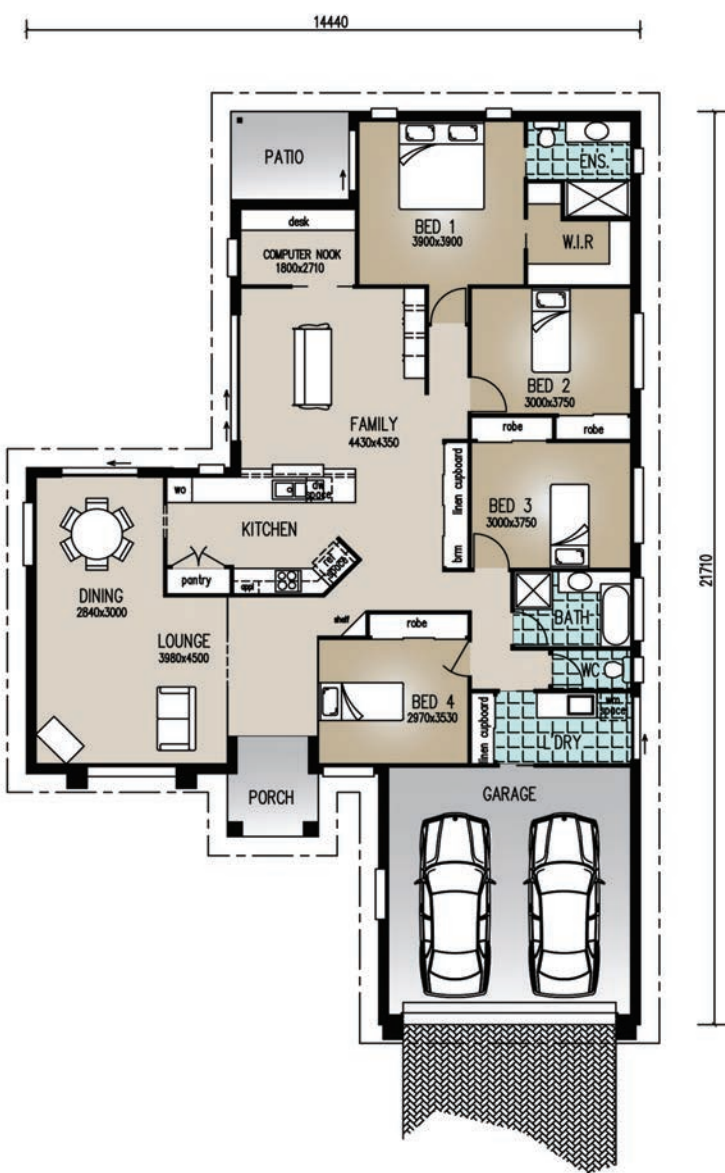




Perspective & Floor Plan are artists impressions only



## 'The Cuttaburra'

### Home Features

|                         |                              |
|-------------------------|------------------------------|
| Living                  | 215.90m <sup>2</sup>         |
| Patio                   | 5.80m <sup>2</sup>           |
| Porch                   | 4.10m <sup>2</sup>           |
| <b>Total Floor Area</b> | <b>- 225.80m<sup>2</sup></b> |

### Designer Notes:

This luxury home plan includes 4 Bedrooms and a large, separate Computer Room. The Master Suite has a large Walk in Robe and a private Patio, complementing the overall luxurious feel that this home exudes. Its substantial Front Porch area welcomes guests and increases its street appeal.

email:  
[sales@richardadamshomes.com.au](mailto:sales@richardadamshomes.com.au)

# Richard Adams

RESIDENTIAL &  
 COMMERCIAL  
 BUILDERS