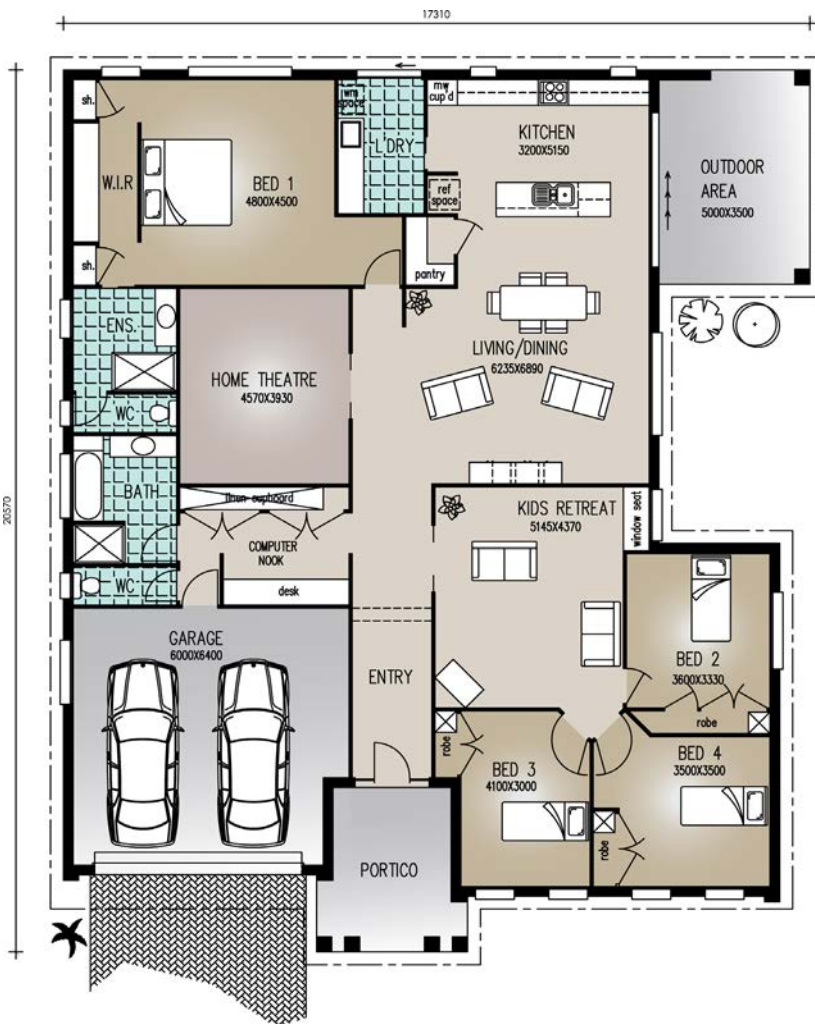




Perspective & Floor Plan are artists impressions only



'The Fairview'

Home Features

Living	279.10m ²
Outdoor	17.50m ²
Portico	11.70m ²
Total Floor Area	- 308.30m²

Designer Notes:

Designed specially for families, this impressive home offers amazing space with separate children's areas accessed through the Retreat. But the real 'wow' feature is the magnificent chef's Kitchen, pantry and Laundry. This is a great home!!

email:
sales@richardadamshomes.com.au

Richard Adams

RESIDENTIAL &
 COMMERCIAL
 BUILDERS