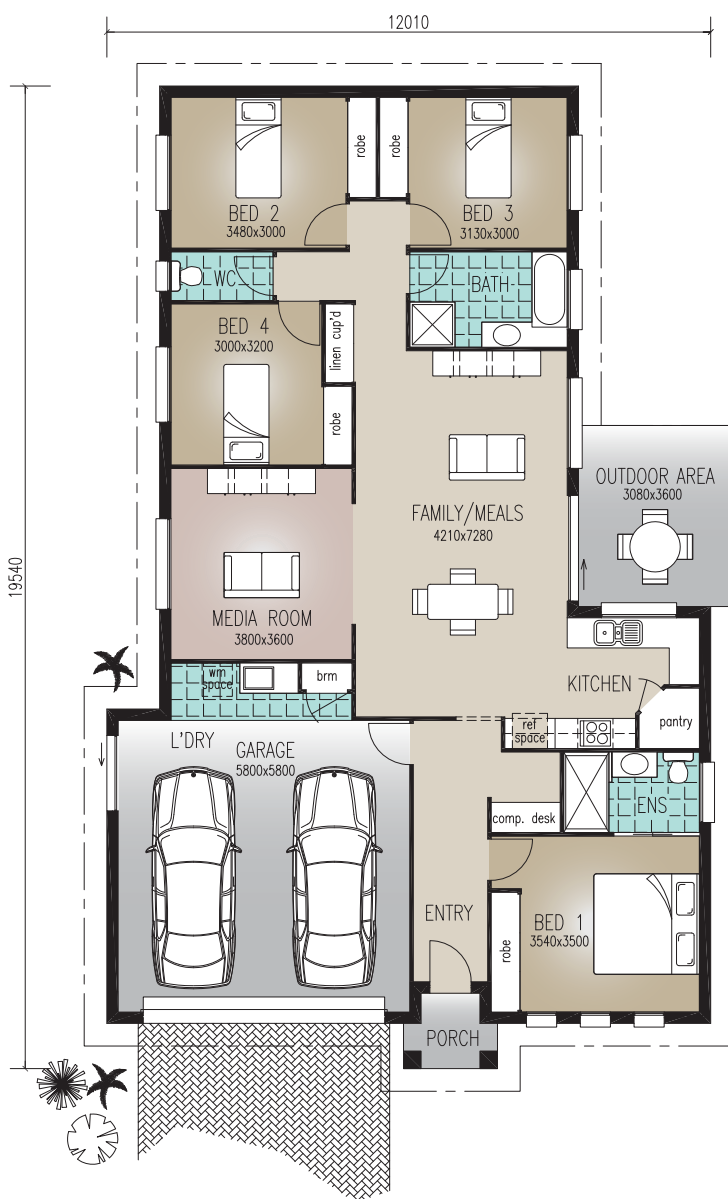




Perspective & Floor Plan are artists impressions only



## 'The Lindsey'

### Home Features

Living Area	182.9m <sup>2</sup>
Outdoor Area	11.1m <sup>2</sup>
Portico Area	2.4m <sup>2</sup>
<b>Total Floor Area</b>	<b>196.4m<sup>2</sup></b>

### Designer Notes:

This delightful home speaks volumes about the clever use of space in homes - with 4 bedrooms and a computer nook central to the family area's. It covers all design aspects that modern families want to see - separate media room and light, airy living area's compliment this compact home.

Email:  
sales@richardadamshomes.com.au

# Richard Adams

RESIDENTIAL &  
COMMERCIAL  
BUILDERS